



WHAT

What is ACCESS Credit Recovery?

Credit recovery courses permit students to prove mastery in units, allowing them to move past units in which they are proficient and concentrate on units in which they need additional work.



Current available courses include:

- Algebra IA • Algebra IB
- Algebra I • Algebra II • Algebra II w/Trig
- Biology • Chemistry • Economics
- English 9 • English 10
- English 11 • English 12
- Environmental Science
- Geometry • Physical Science
- US Government • US History to 1877
- US History from 1877 to Present
- World History 1500 to Present

Check accessdl.state.al.us for the latest course offerings

LEARN MORE AT

<http://accessdl.state.al.us>

ACCESS Distance Learning
Technology Initiatives
5351 Gordon Persons Building
P.O. Box 302101
Montgomery, AL 36130-2101
334-242-9594



ALABAMA DEPARTMENT OF EDUCATION
DR. THOMAS R. BICE, STATE SUPERINTENDENT OF EDUCATION

MAR 2014

The Alabama State Board of Education and the Alabama State Department of Education do not discriminate on the basis of race, color, disability, sex, religion, national origin, or age in its programs, activities, or employment and provide equal access to the Boy Scouts and other designated youth groups. The following person is responsible for handling inquiries regarding the non-discrimination policies: Title IX Coordinator, Alabama State Department of Education, P.O. Box 302101, Montgomery, AL 36130-2101, (334) 242-8165.

"The world our students are coming into is so different from the one we entered. They're competing on a global level ... and ACCESS gives them a boost of confidence that they can compete in this way."

– ACCESS Teacher

ACCESS Distance Learning:

Credit Recovery

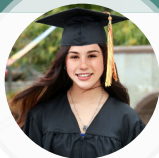


A GUIDE TO ACCESS CREDIT RECOVERY

WHAT

What are some features of ACCESS Distance Learning Credit Recovery Courses?

- ACCESS Credit Recovery courses are free to students enrolled in Alabama public schools in Grades 9-12. Each learning module contains a pretest to determine the level of student mastery. If the student scores 70% or better, he/she continues to the next module. With a score of less than 70%, the student must complete regular coursework for that module and must complete a post-test in order to advance to the next module.
- All ACCESS courses maintain a high level of rigor. Students in credit recovery will be expected to complete all coursework assigned when pretest mastery is not met.
- Local LEAs will determine eligibility for credit recovery based on their policies and SDE or FirstChoice guidelines. Local districts/ schools may enroll students in the ACCESS Credit Recovery course(s) at any time, and students may take all or half of a full credit course.



Vision

The state of Alabama will provide equal access to high-quality instruction to improve student achievement through distance learning opportunities.



WHO

Who plans and oversees the implementation of ACCESS Credit Recovery?

Alabama State Department of Education
ACCESS DL Task Force
K-20 Representatives
Community
Other State Agencies
ACCESS DL Support Centers
ACCESS DL Executive Board

MADISON CITY SCHOOLS

Judy Bollinger, Director

Tel: 256-464-8370 · Toll Free: 877-295-0526 · Fax: 256-464-8291

E-mail: jbollinger@madisoncity.k12.al.us

THE UNIVERSITY OF ALABAMA

Barry Barnett, Director

Tel: 205-348-2647 · Toll Free (Online): 866-205-1011

Toll Free (VCI): 866-591-9998 · Fax: 205-348-2585

E-mail: bbarnett@ccs.ua.edu

TROY UNIVERSITY

Reba Davis, Director

Tel: 334-670-5878 · Toll Free: 866-399-7512 · Fax: 334-670-3098

E-mail: rdavis@troy.edu

HOW

How does Credit Recovery work?

Local LEAs will determine how to use the credit recovery grade based on their system policies. It is up to the local school systems to make sure students are aware of LEA policies. Please note that ACCESS Credit Recovery courses are not accepted by NCAA for eligibility purposes.

ACCESS Distance Learning Support Center Regions

